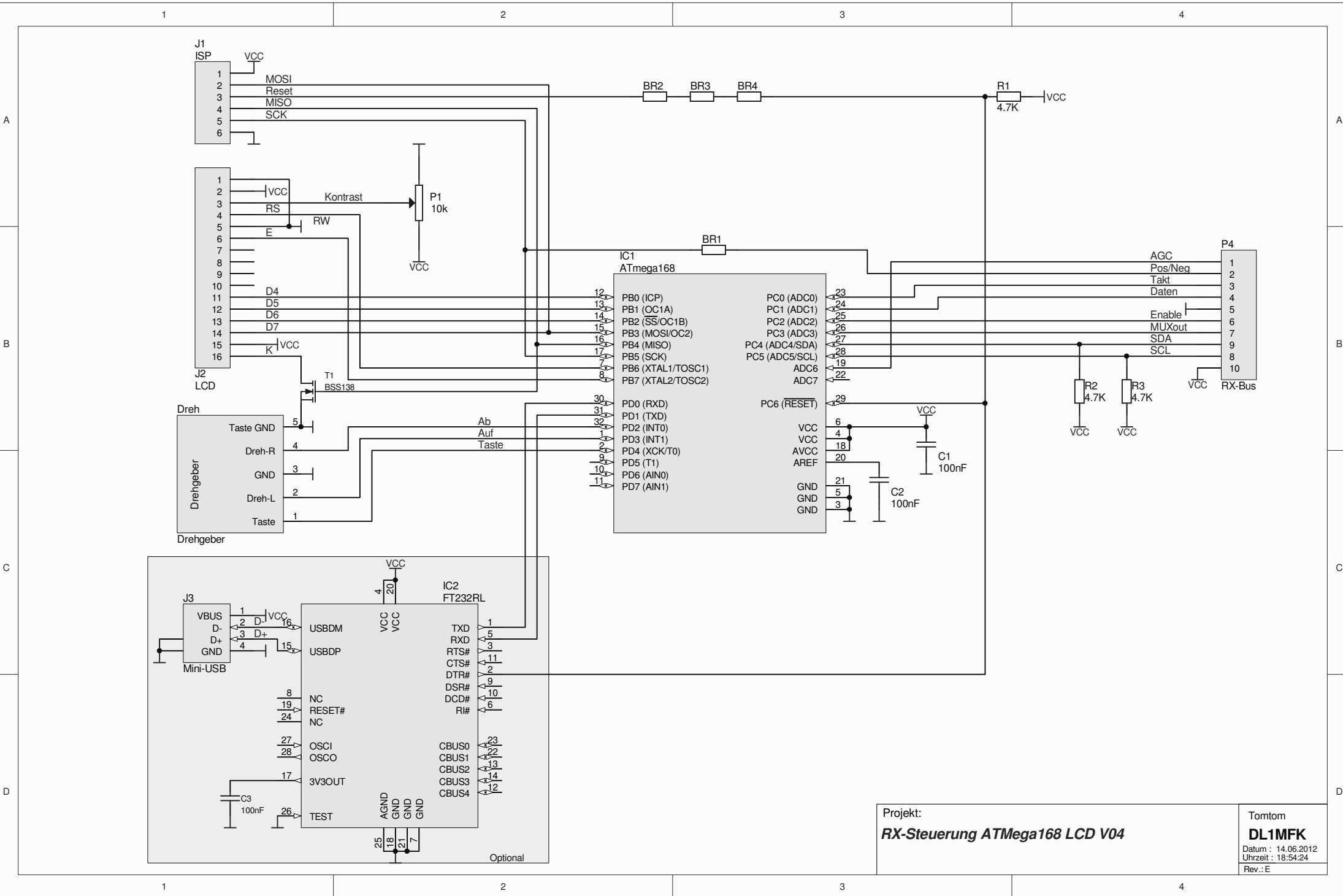
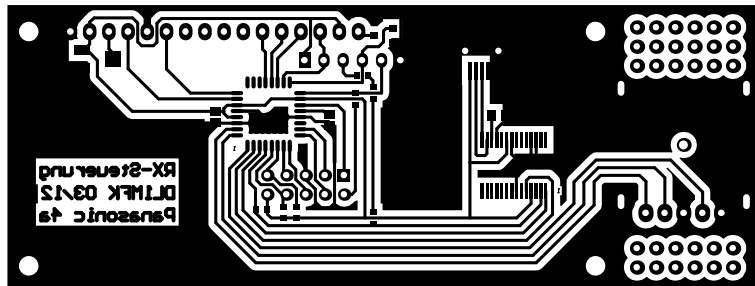


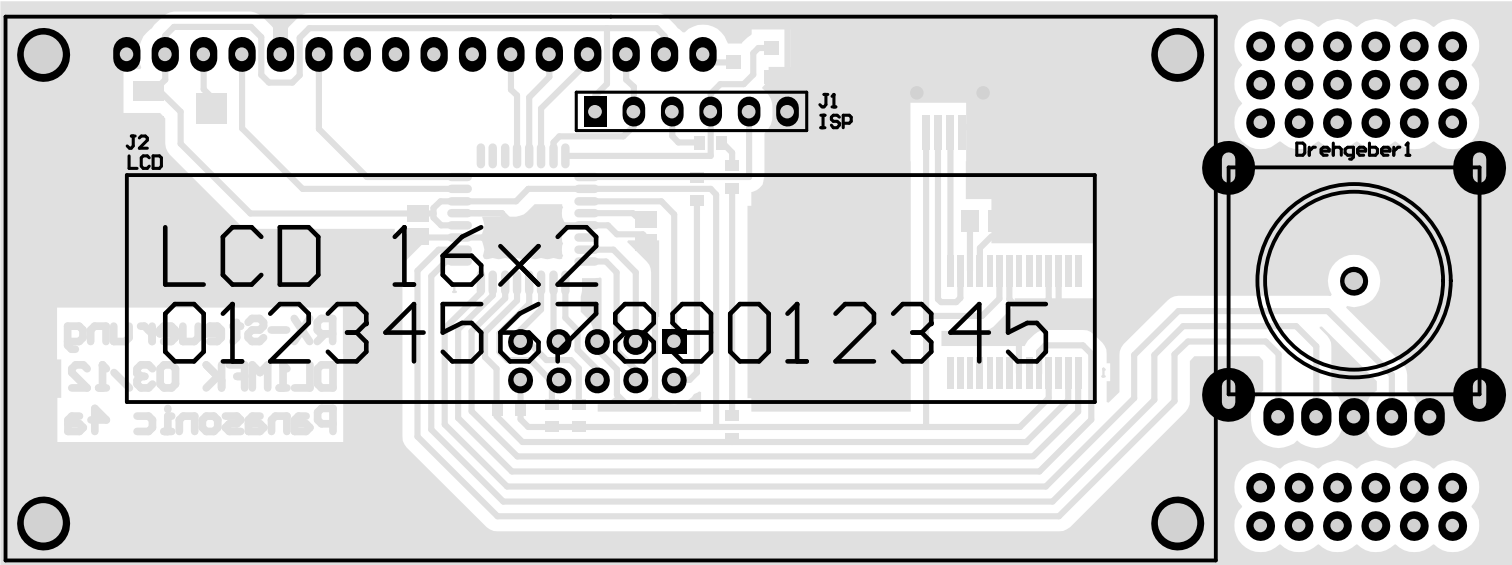
RX BBA UB7a DLINK 06/12

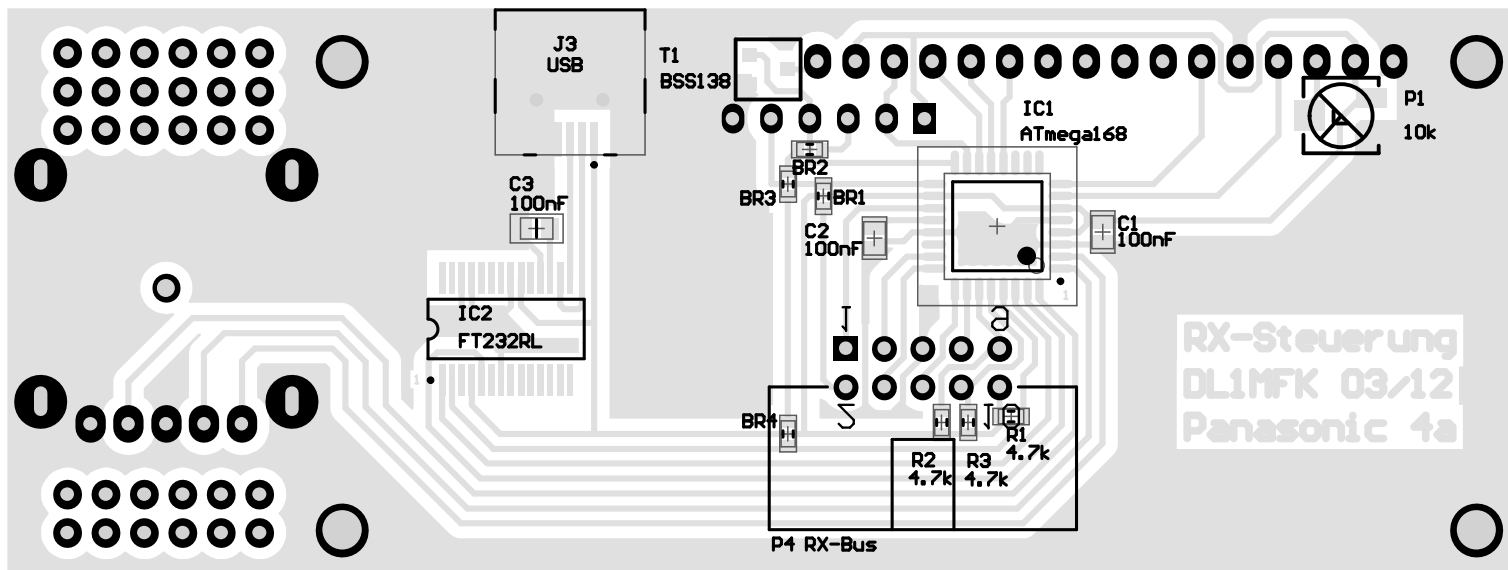


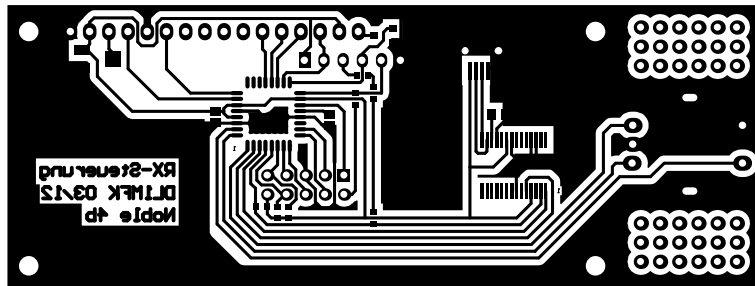
Projekt:
RX-Steuerung ATmega168 LCD V04

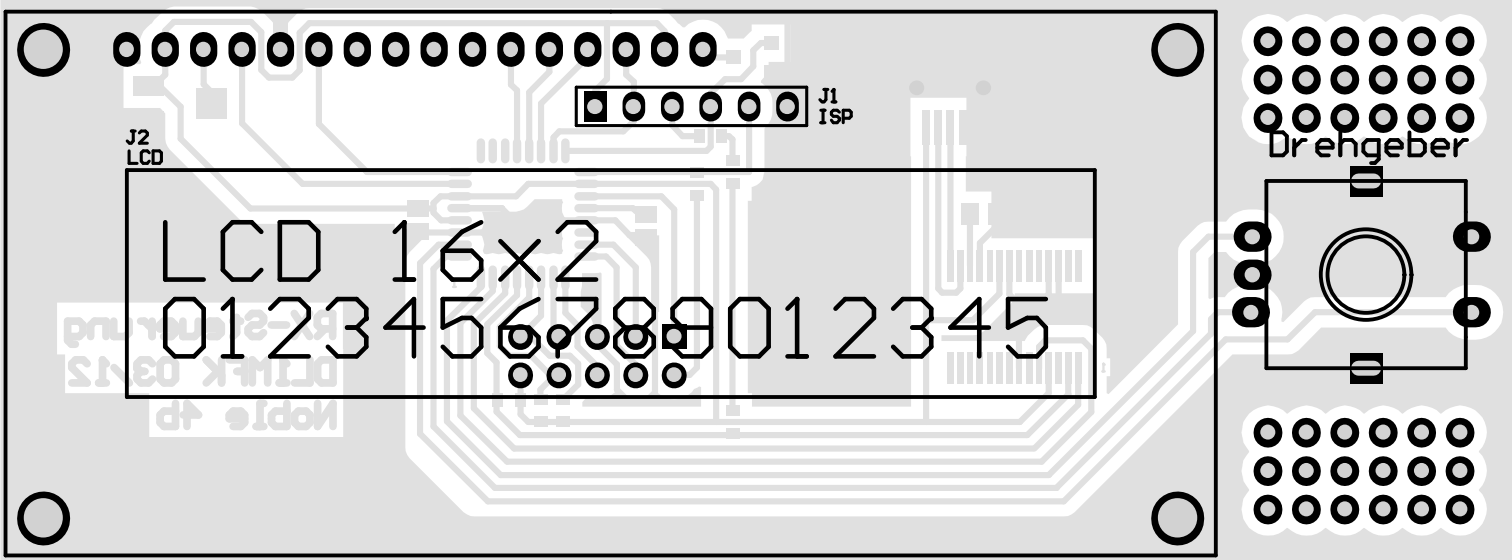
Tomtom
DL1MFK
 Datum : 14.06.2012
 Uhrzeit : 18:54:24
 Rev.: E

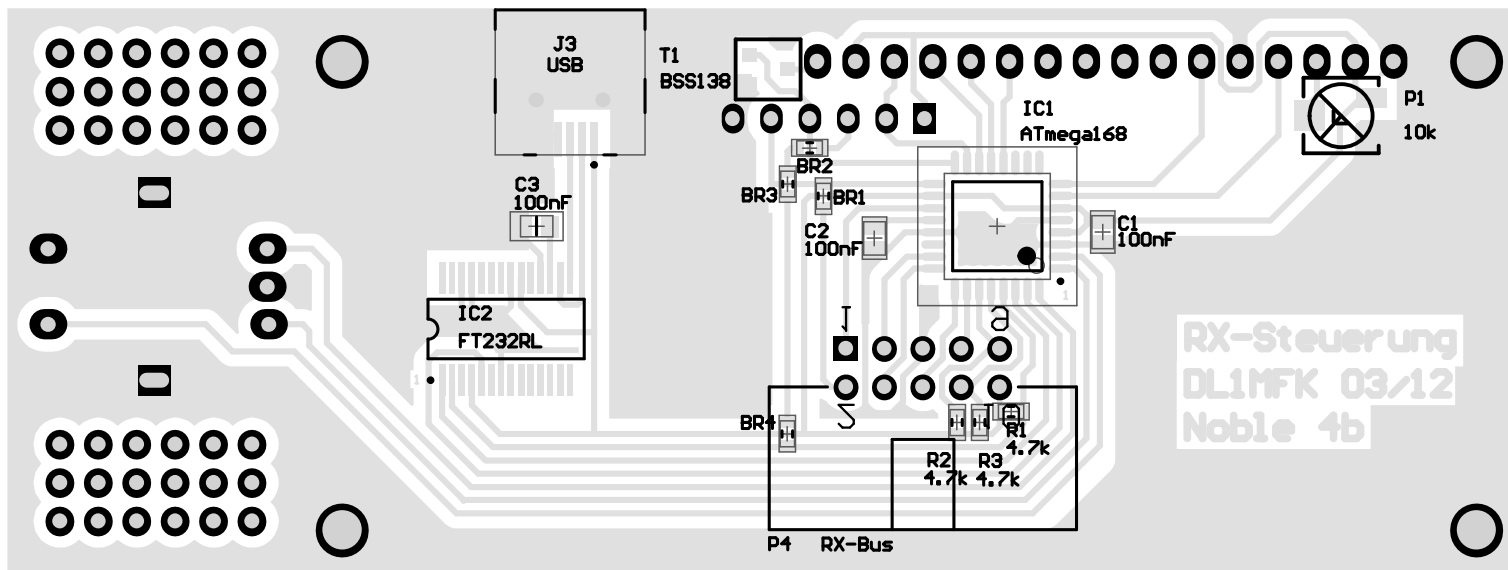


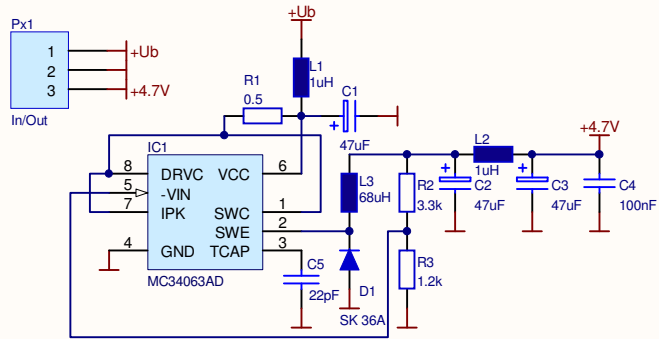








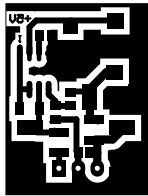


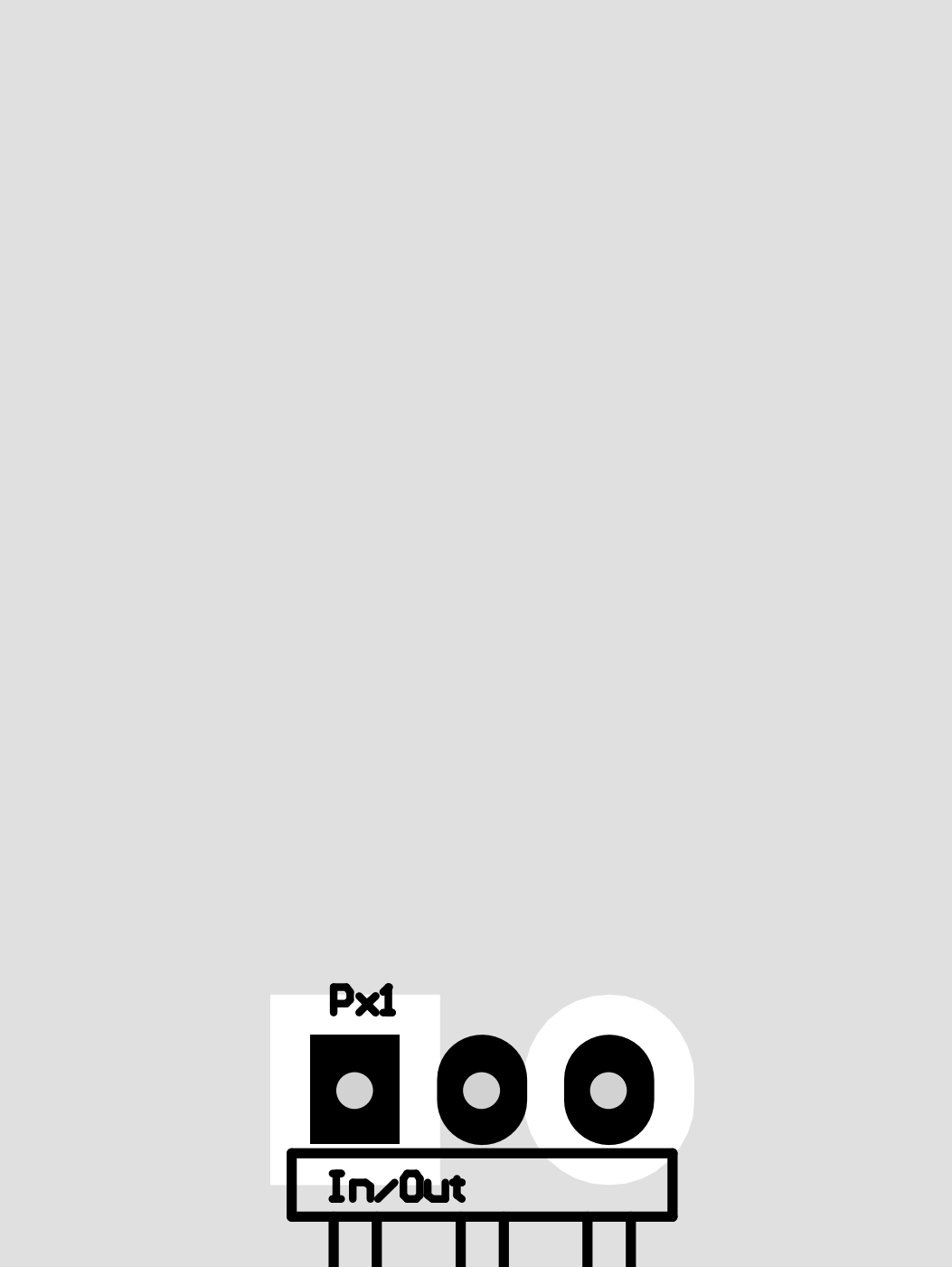


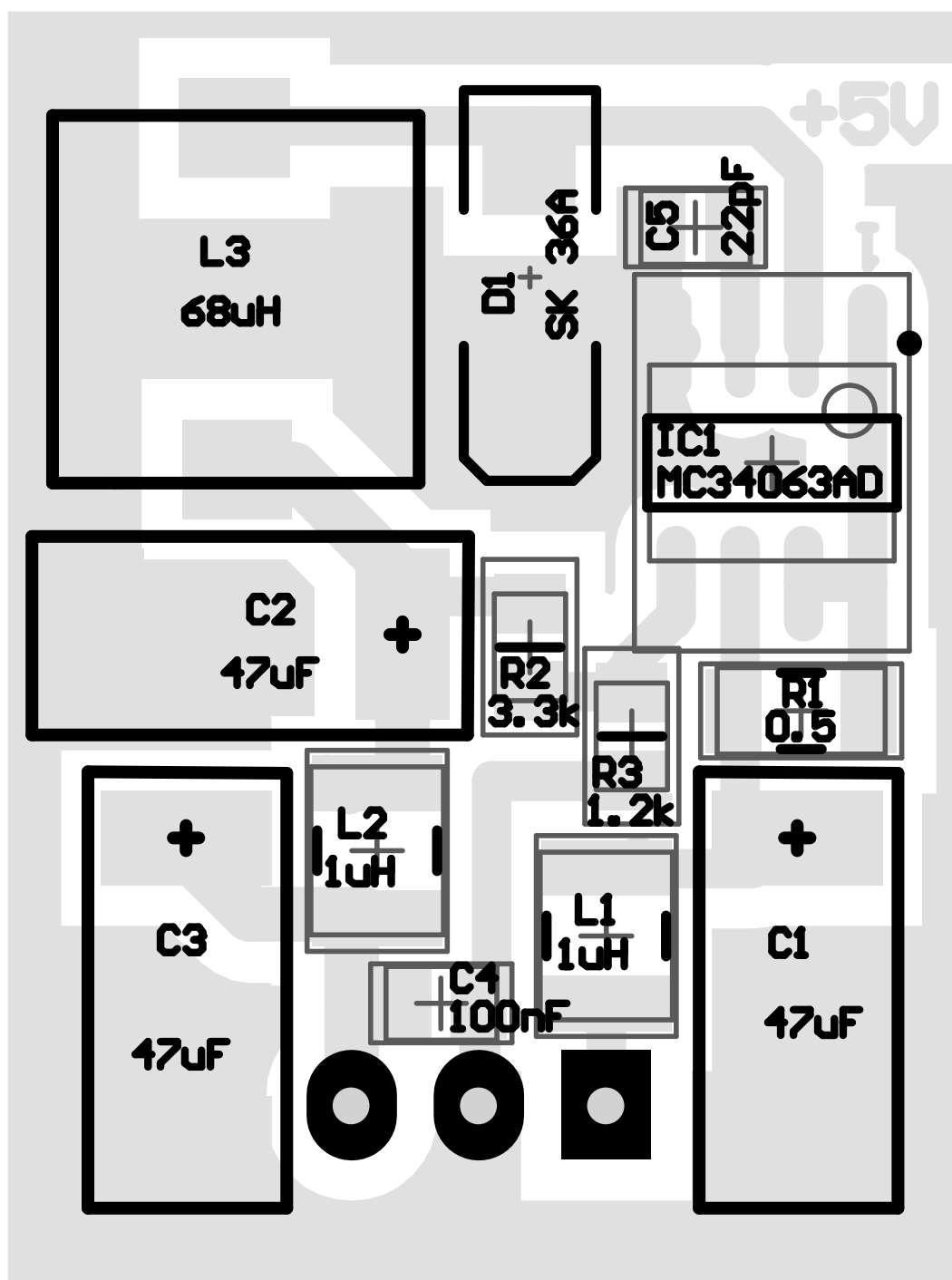
Projekt:
Schaltregler mit MC34063 SO-8 bis 300mA

Tomtom
DL1MFK
 Datum : 14.06.2012
 Uhrzeit : 18:56:00
 Rev..*









1

2

3

4

A

A

B

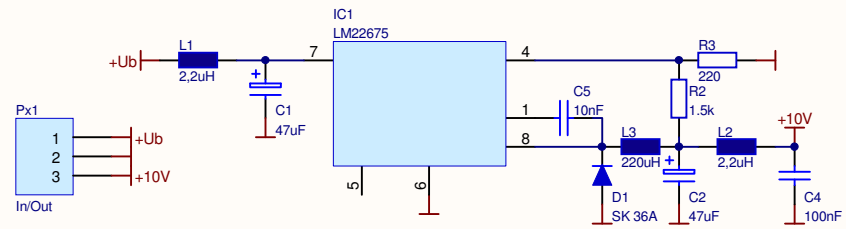
B

C

C

D

D



Projekt:
Schaltregler LM22675 +10V 150mA

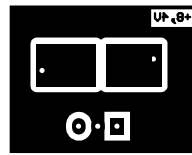
Tomtom
DL1MFK
 Datum : 14.06.2012
 Uhrzeit : 18:58:03
 Rev..*

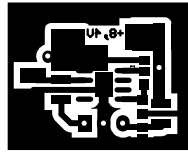
1

2

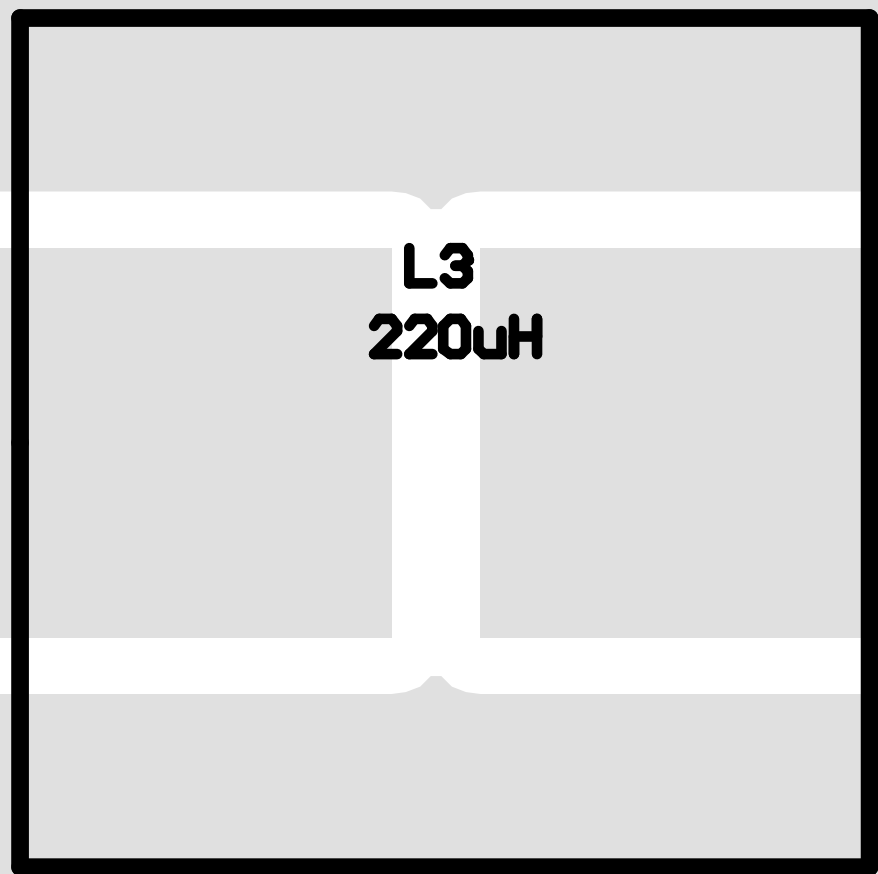
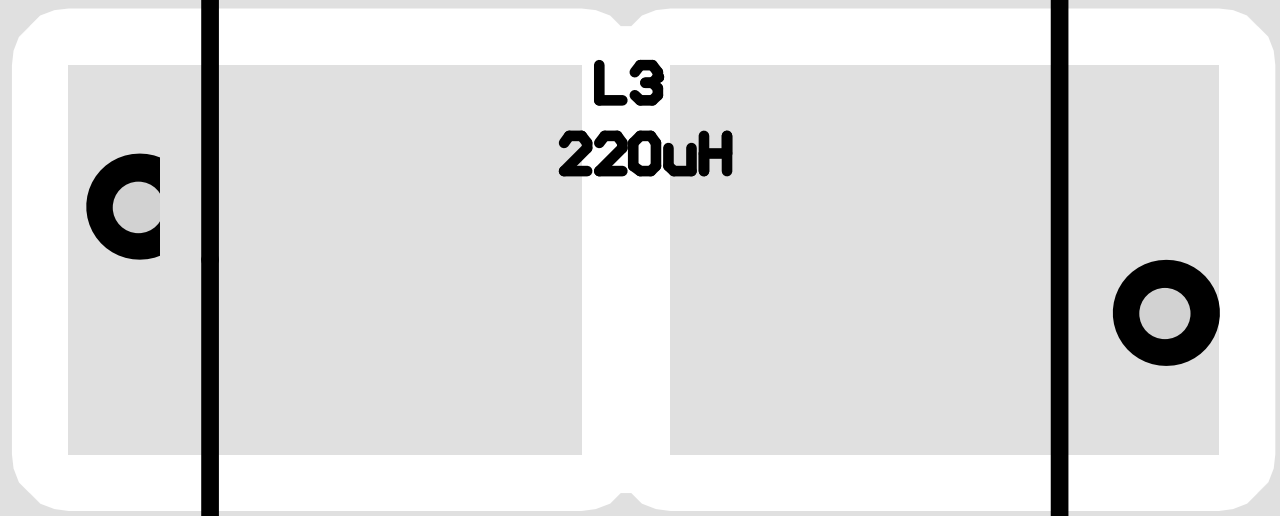
3

4





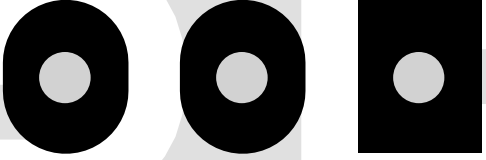
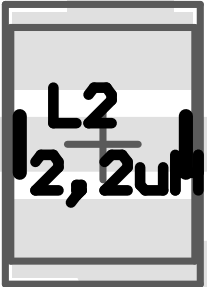
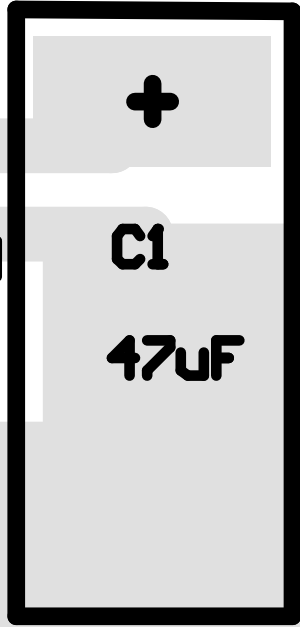
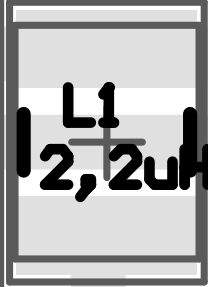
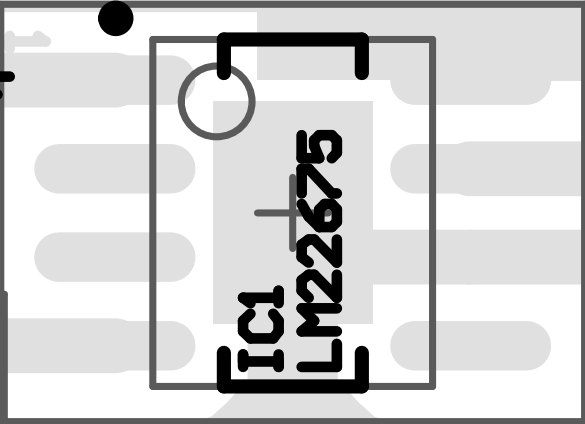
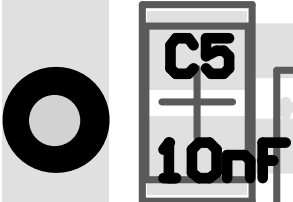
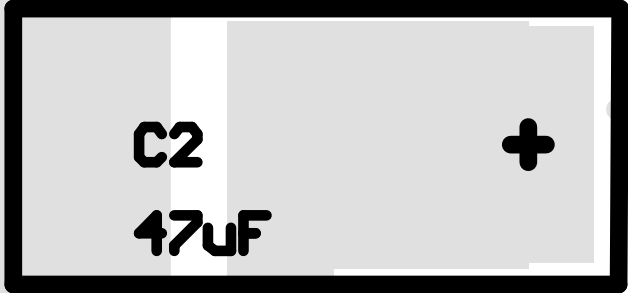
+8, 4V



PXI



In/Out



1

2

3

4

A

A

B

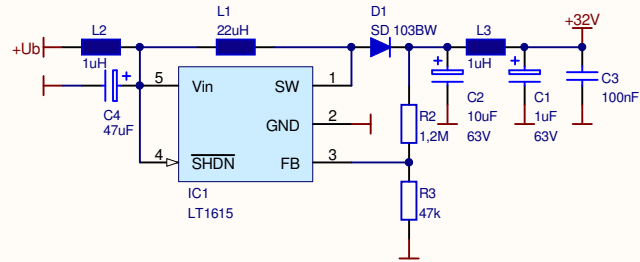
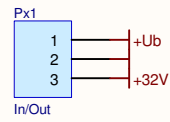
B

C

C

D

D



Projekt:
Schaltregler mit LT1615 30V 10mA

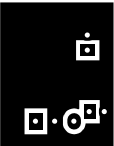
Tomtom
DL1MFK
Datum : 14.06.2012
Uhrzeit : 18:59:04
Rev..*

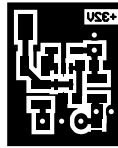
1

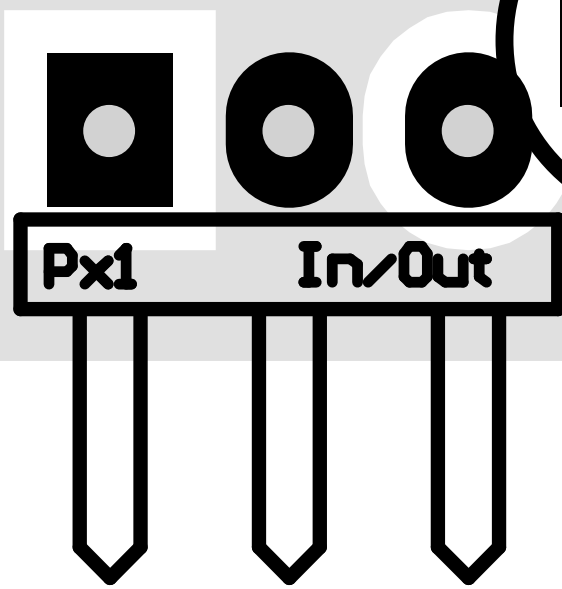
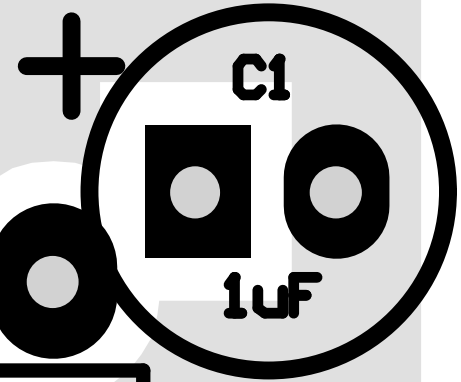
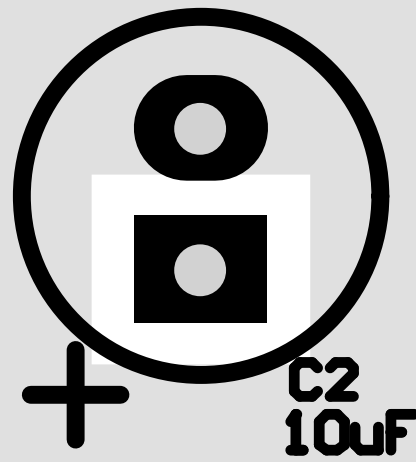
2

3

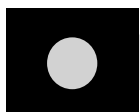
4



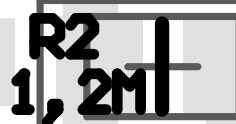




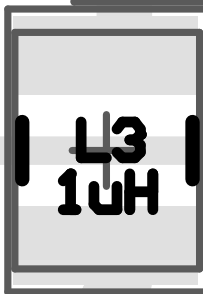
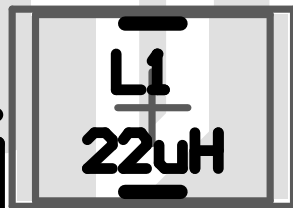
+32V



D1 SD 103BW



IC1



LT1615

