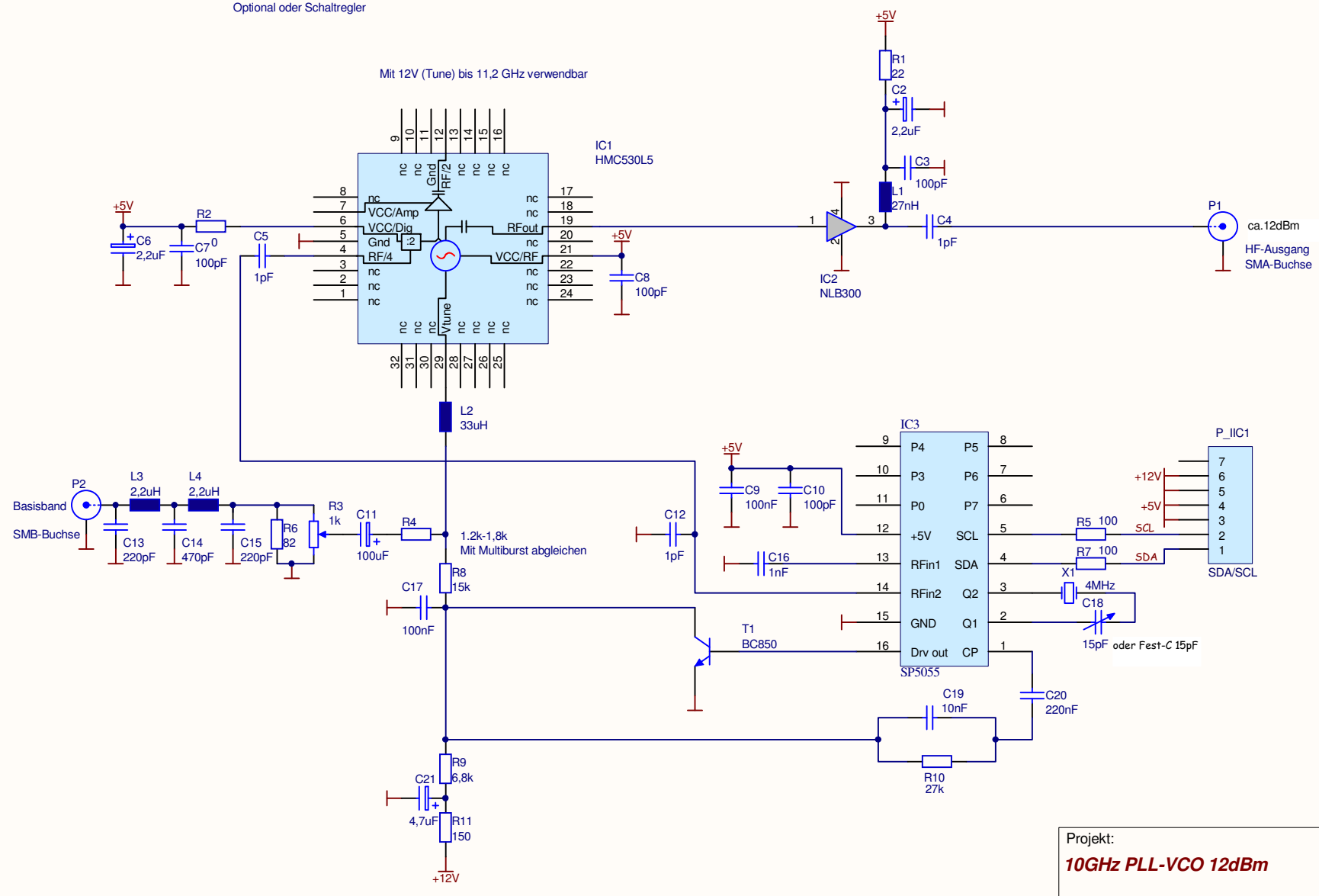
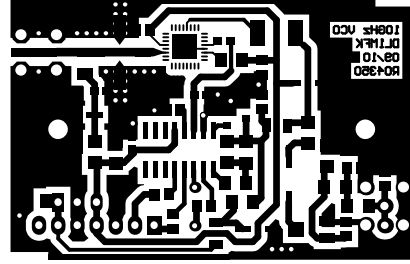
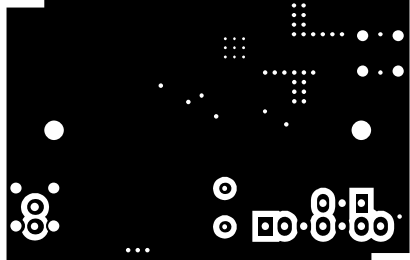


Mit 12V (Tune) bis 11,2 GHz verwendbar

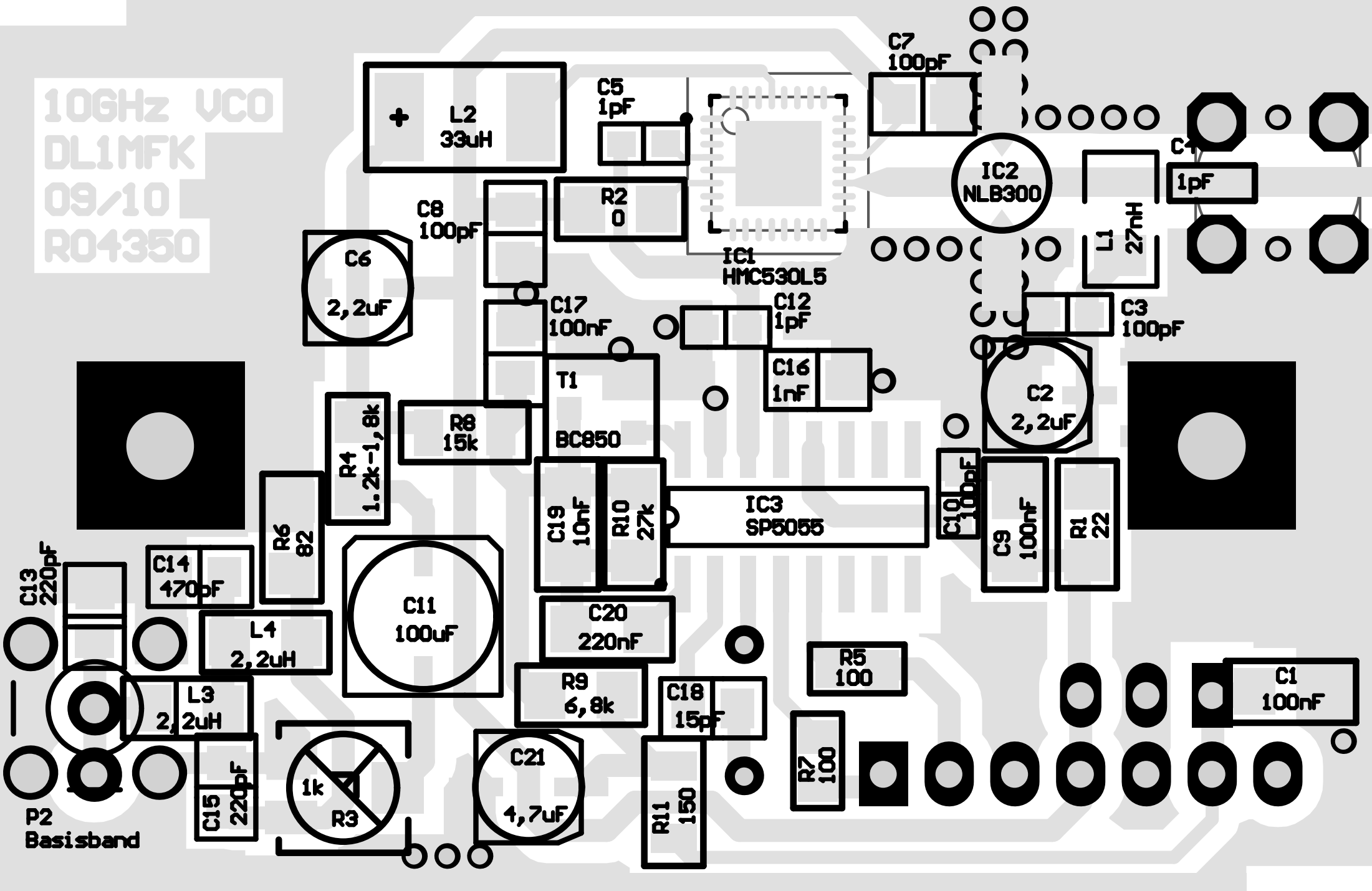


Projekt:	Tomtom
10GHz PLL-VCO 12dBm	DL1MFK
	Datum : 03.03.2012
	Uhrzeit : 22:53:37
	Rev.:D





10GHz VCO
DL1MFK
09/10
R04350



P2
Basisband

