

Projekt:
Mini BBA mit NE592 Dip 8 Version 2

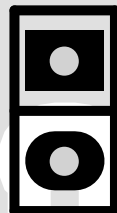
Tomtom
DL1MFK

Rev.: **A** Datum: 03.09.2010
 Uhrzeit: 18:15:42

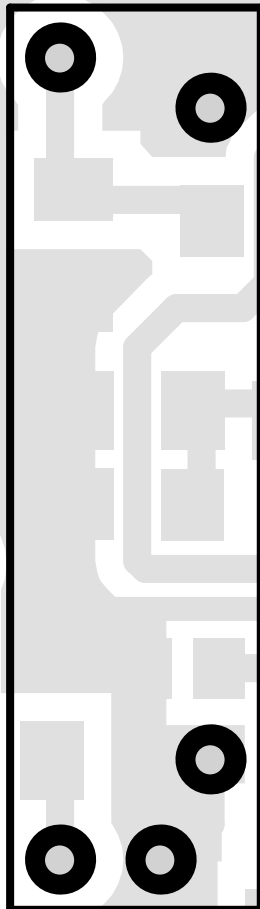
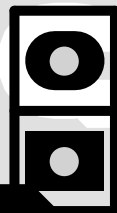
Datei: Mini BBA NE592 DIP8 V2_SchDoc

Videofilter

P1
Video

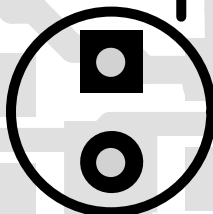
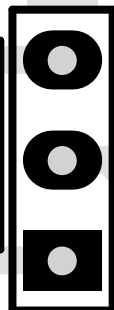


P4
Audio



IC1
NE592 DIP8

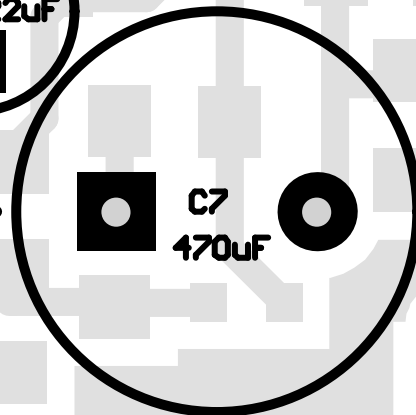
pos/neg



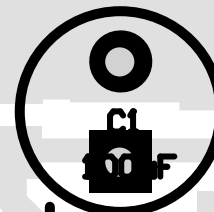
C5
10uF



C45
22uF

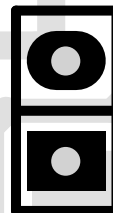


C7
470uF



C1
100uF

P2
BB



78L10

P3
10-15V 100mA



MiniBBA Dip8 Vo.2c

DTWEL 06/10

DL1MFK 06/10

MiniBBA Dip8 Vo.2c

